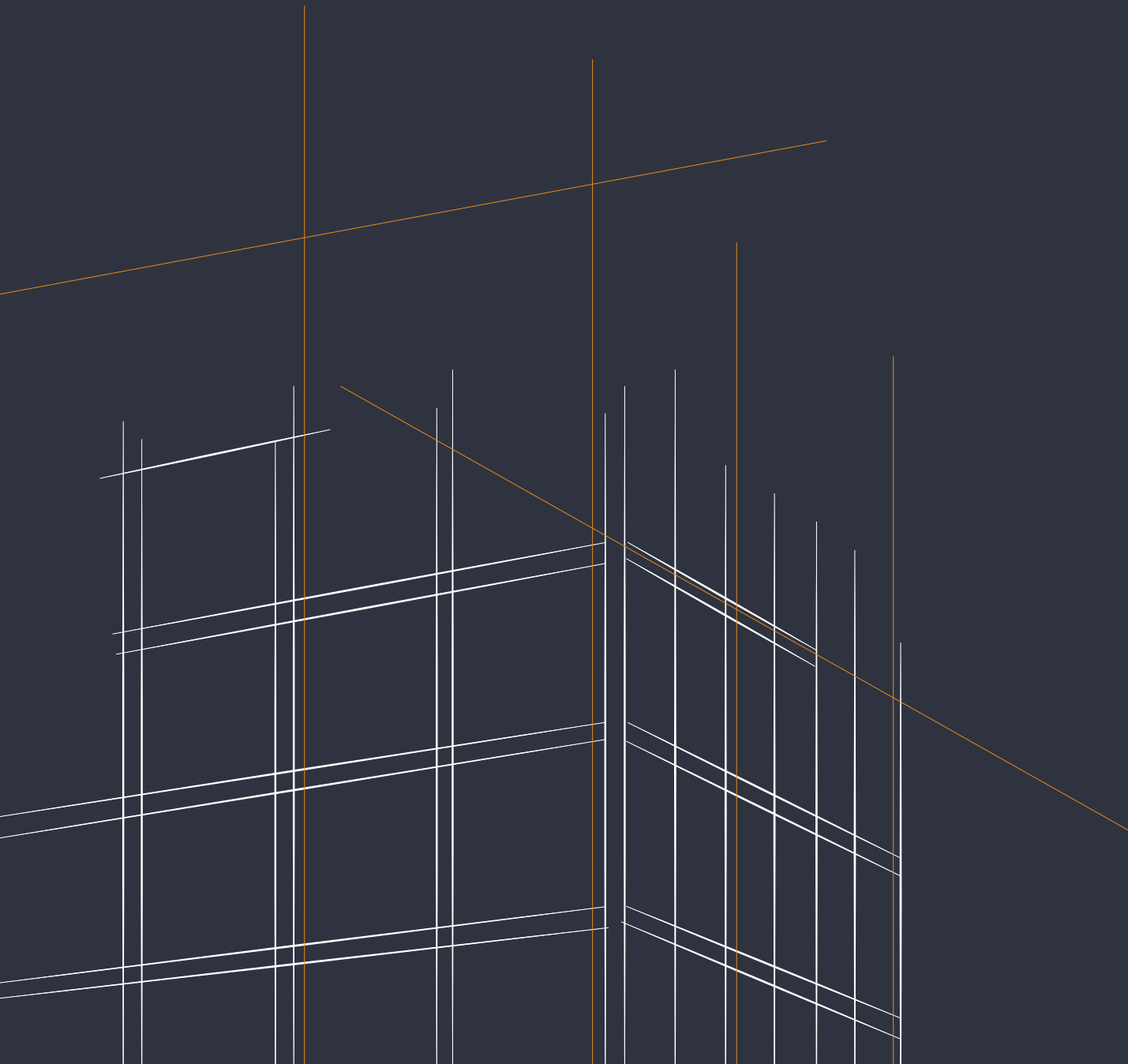


Steel fabrication Steel trade



Mass Finishing



High-performance equipment and innovative technologies – productive and cost-effective

Shot Blasting



Customer-oriented equipment technology and intelligent process solutions – long-lasting and energy-efficient

AM Solutions



Comprehensive solutions for additive manufacturing, especially 3D post processing equipment

› **80**

More than 80 years of **experience**



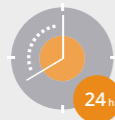
15 locations –
over **150** distributors –
over **1,500** employees **across the globe**



Worldwide **Customer Experience Center**



More than **15,000**
different types of media and compounds



Our technical service –
round-the-clock support



Transfer of professional knowledge
by certified trainers

Contents

Roller conveyor blast machines RRB	4 - 5
Preservation lines KON	6 - 9
Roller conveyor blast machines for weldments RRBK	10 - 11
Continuous feed spinner hanger blast machines RHBD-K	12 - 13
Partners for Steel P4S	14 - 15
Equipment modernization	16 - 17
Turbine technology	18
After-Sales-Service	19
Customer Experience Center	20
Learning from the global market leader - Rösler Academy	21
Rösler Smart Solutions – digitization concepts for the shot blasting technology	22 - 23

ROLLER CONVEYOR BLAST MACHINE RRB

Descaling, de-rusting, paint stripping, surface texturing and cleaning of steel plates, profiles, beams and pipes

Roller conveyor machines are equally suitable for shot blasting of thin-gauge steel plates as well as very heavy and large steel beams. They produce **all-around, excellent and absolutely repeatable** shot blasting results and allow a high degree of automation.



The Rösler roller conveyor blasting machines RRB guarantee

- ▶ Fast pass-through times of up to 6 m/min
- ▶ Optimal performance and minimal wear of the turbines
- ▶ A minimum in maintenance work
- ▶ Easy integration into already existing manufacturing lines
- ▶ Trouble-free operation in a multi-shift environment

1 Work piece transport

- ▶ Spacing and diameter of the transport rollers in the external roller conveyors are adapted to the individual work pieces
- ▶ Modular design allows different configurations and facilitates the assembly
- ▶ Individually controlled cross conveyors save energy
- ▶ Specially hardened transport rollers in the blast chamber minimize wear

2 Shot blast machine – low operating costs & high efficiency

- ▶ Blast chamber made from manganese steel offers optimal wear protection
- ▶ Easily exchangeable, hung manganese steel wear plates in the blast chamber guarantee long uptimes
- ▶ Extra wide cascade air wash separator ensures excellent cleaning of the blast media
- ▶ Placement of the dust collector on the blast machine saves valuable space
- ▶ Different turbine sizes allow perfect adaptation of the shot blast machines to the processing tasks
- ▶ Ideal turbine positions - determined with special computer simulations – guarantee perfect blast patterns
- ▶ Numerous inspection doors and lids facilitate maintenance

3 Work piece cleaning

- ▶ Fast pass-through times of up to 6 m/min
- ▶ Optimal performance and minimal wear of the turbines
- ▶ A minimum in maintenance work
- ▶ Easy integration into already existing manufacturing lines
- ▶ Trouble-free operation in a multi-shift environment

Specifications RRB

Model	RRB 11/5	RRB 16/5	RRB 16/5-HD	RRB 22/5	RRB 22/5-HD
Max. work piece width (mm)	1,000	1,500	1,500	2,000	2,000
Max. work piece height (mm)	500	500	500	500	500
Turbines	4x Gamma 300G	4x Gamma 400G	4x Gamma 400G	6x Gamma 400G	6x Gamma 400G
Turbine power. Standard / Optional (kW)	7,5 / 11	11 / 15	22 / 30	11 / 15	15 / 22
Distributed load. Standard (kg/m)*	1,250	1,250	1,250	1,250	1,500
Transport height above floor level (mm)	1,000	1,200	1,200	800	800
Foundation required	No	No	No	Yes	Yes
Shot blast performance (m/min)*	1.5 - 2.5	1.5 - 2.5	2.0 - 4.0	1.5 - 2.5	2.0 - 4.0
Capacity dust collector (m³/h)	5,000	7,500	10,000	7,500	10,000

Model	RRB 27/6	RRB 27/6-HD	RRB 34/6-HD	RRB 42/6-HD	RRB 47/6-HD
Max. work piece width (mm)	2,500	2,500	3,200	4,000	4,500
Max. work piece height (mm)	600	600	600	600	600
Turbines	6x Gamma 400G	6x Gamma 400G	8x Gamma 400G	8x Gamma 400G	8x Gamma 400G
Turbine power, Standard / Optional (kW)	11 / 15	15 / 22	15 / 22	15 / 22	30 / 37
Distributed load, Standard (kg/m)*	1,250	2,000	2,000	2,000	2,000
Transport height above floor level (mm)	800	800	800	800	800
Foundation required	Yes	Yes	Yes	Yes	Yes
Shot blast performance (m/min)*	1.5 - 2.5	2.0 - 4.0	2.0 - 4.0	2.0 - 4.0	2.0 - 4.0
Capacity dust collector (m³/h)	10,000	15,000	15,000	20,000	20,000

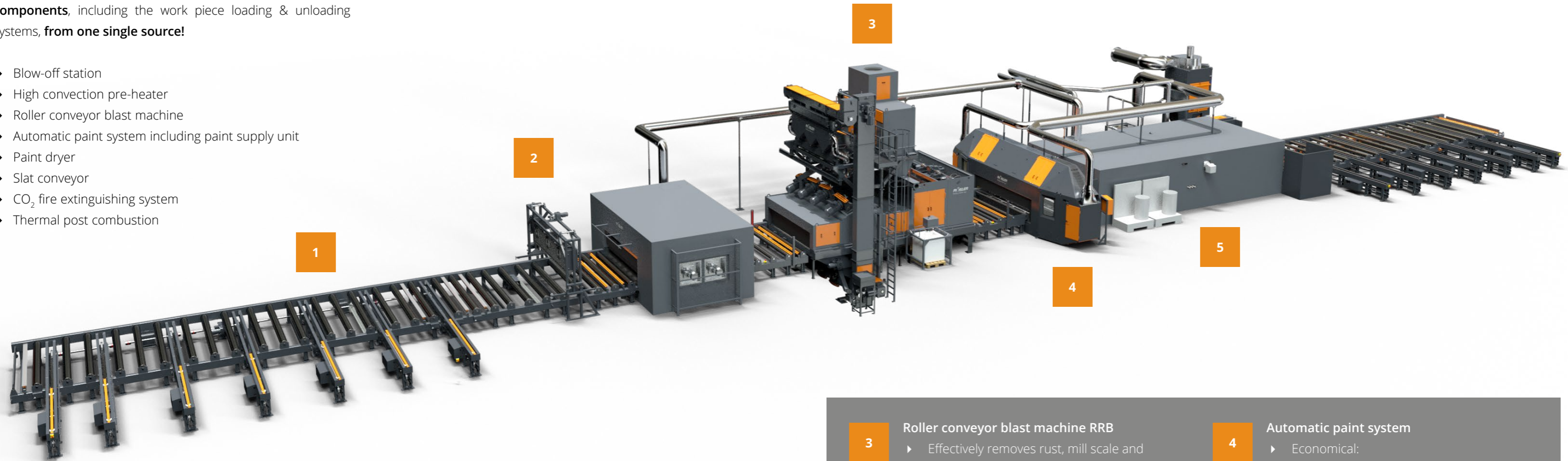
*) Higher shot blast performance and distributed load available upon request

PRESERVATION LINE KON

The application of solvent- or water-based welding primers offers a temporary protection against corrosion on steel plates, profiles and pipes

Preservation lines can be easily integrated into manufacturing lines and can be fully automated. You receive **all process components**, including the work piece loading & unloading systems, **from one single source!**

- ▶ Blow-off station
- ▶ High convection pre-heater
- ▶ Roller conveyor blast machine
- ▶ Automatic paint system including paint supply unit
- ▶ Paint dryer
- ▶ Slat conveyor
- ▶ CO₂ fire extinguishing system
- ▶ Thermal post combustion



1 Work piece transport

- ▶ Cross conveyors
- ▶ Slat conveyors with minimal contact area to the work pieces
- ▶ Tilttable roller conveyors with blast media return system
- ▶ Centering units
- ▶ Decollating (separating) stations
- ▶ Can be fully automated

2 Pre-treatment of work pieces stored outside

- ▶ Work piece cleaning with blow-off station
- ▶ Energy-saving high convection pre-heater

3

Roller conveyor blast machine RRB

- ▶ Effectively removes rust, mill scale and other contaminants
- ▶ Ideal turbine positions - determined with special computer simulations - guarantee perfect blast patterns
- ▶ All-around, excellent and absolutely repeatable shot blasting results
- ▶ Fast pass-through times of up to 6 m/min
- ▶ For detailed information see pages 4 - 5

4

Automatic paint system

- ▶ Economical:
 - Low paint consumption
 - Optimized air flow
 - Minimal overspray
- ▶ Intelligent work piece width and height recognition system
- ▶ Fully automatic paint mixing system
- ▶ Teflon coating of the paint booth interior prevents paint adhesion
- ▶ Brush pre-cleaning system reduces the load of the paint filter by 60 - 80 %

5

Paint dryer

- ▶ Supply of surplus heat from the pre-heater reduces the energy consumption
- ▶ All-around warm air flow guarantees even drying results

PRESERVATION LINE KON

The application of solvent- or water-based welding primers offers a temporary protection against corrosion on steel plates, profiles and pipes

Blow-off station

Loose surface contaminants and water are removed by air. Depending on the width of the blow-off station one or several radial fans ensure the optimal air flow.



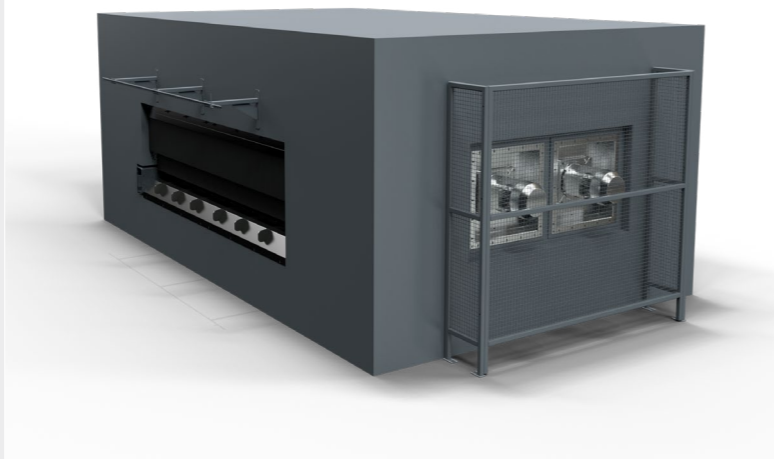
Automatic paint system

All currently available solvent- and water-based paints can be processed, irrespective of whether they are 1-, 2- or 3-component materials. Material recognition systems allow the precise determination of the work piece size and, thus, minimize overspray. The brush pre-cleaning system catches the majority of loose paint particles and reduces the load of the paint filter by 60 - 80 %.



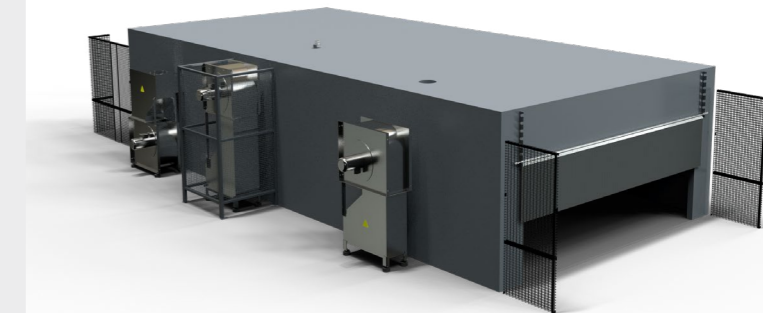
High convection pre-heater

A frequency inverter adapts the air flow to the work piece thickness and pass-through speed. After the warm air is extracted from the pre-heater chamber, it is passing by the burner system for re-heating and blown back into the chamber.



Paint dryer

The dryer ensures even drying of the applied paint. It is supplied with surplus air from the pre-heater. The dryer length is adapted to the drying time, the thickness of the paint layer and the pass-through time.



ROLLER CONVEYOR BLAST MACHINE FOR WELDMENTS RRBK

Descaling of steel fabrications, cleaning of the welding seams

The roller conveyor blast machines for weldments were designed for the **all-around blast cleaning** of large and complex steel fabrications, even with **difficult-to-reach undercuts**.

The Rösler roller conveyor blast machine RRBK guarantee

- ▶ Fast pass-through times of up to 6 m/min
- ▶ Optimal performance and minimal wear of the turbines
- ▶ A minimum in maintenance work
- ▶ Easy integration into already existing manufacturing lines
- ▶ Trouble-free operation in a multi-shift environment



3 Optional: work piece cleaning system

- ▶ Prevents media-carryout on steel plates and profiles
- ▶ Separate housing prevents media from migrating into the work piece cleaning system
- ▶ Cleaning system consists of a rotary brush and a blow-off station
- ▶ Fully automatic recognition of the work piece height
- ▶ Highly effective automatic return of the thrown blast media into the recycling system

1 Work piece transport

- ▶ Spacing and diameter of the transport rollers in the external roller conveyors are adapted to the individual work pieces
- ▶ Modular design allows different configurations and facilitates the assembly
- ▶ Individually controlled cross conveyors save energy
- ▶ Specially hardened transport rollers in the blast chamber minimize wear
- ▶ Optional: Prevention of blast media loss through media collection trough below the exit roller conveyor

2 Shot blast machine – low operating costs & high efficiency

- ▶ Turbines arranged at an angle and mounted to all four sides of the blast chamber
- ▶ Ideal turbine positions - determined with special computer simulations – guarantee perfect blast patterns
- ▶ Different turbine sizes allow perfect adaptation of the shot blast machines to the processing tasks
- ▶ Blast chamber made from manganese steel offers optimal wear protection
- ▶ Easily exchangeable, hung manganese steel wear plates in the blast chamber guarantee long uptimes
- ▶ Extra wide cascade air wash separator ensures excellent cleaning of the blast media
- ▶ Placement of the dust collector on the blast machine saves valuable space
- ▶ Numerous inspection doors and lids facilitate maintenance

Specifications RRBK

Model	RRBK 11/11-HD	RRBK 16/11	RRBK 16/11-HD	RRBK 22/11-HD	RRBK 27/16-HD
Max. work piece width (mm)	1,000	1,500	1,500	2,000	2,500
Max. work piece height (mm)	1,100	1,100	1,100	1,100	1,600
Turbines	8x Gamma 400G	6x Gamma 400G	8x Gamma 400G	12x Gamma 400G	12x Gamma 400G
Turbine power, Standard / Optional (kW)	11	11	11 / 15	11 / 15	15
Distributed load, Standard (kg/m)*	1,250	1,250	1,250	1,500	2,000
Transport height above floor level (mm)	800	800	800	800	800
Foundation required	Yes	Yes	Yes	Yes	Yes
Shot blast performance (m/min)	1.0 - 4.0	1.0 - 2.0	1.0 - 4.0	1.0 - 4.0	1.0 - 4.0

Model	RRBK 27/21-HD	RRBK 34/16-HD	RRBK 42/16-HD
Max. work piece width (mm)	2,500	3,200	4,000
Max. work piece height (mm)	2,100	1,600	1,600
Turbines	14x Gamma 400G	16x Gamma 400G	16x Gamma 400G
Turbine power, Standard / Optional (kW)	15	15	15
Distributed load, Standard (kg/m)*	2,000	2,000	2,000
Transport height above floor level (mm)	800	800	800
Foundation required	Yes	Yes	Yes
Shot blast performance (m/min)	1.0 - 4.0	1.0 - 4.0	1.0 - 4.0

CONTINUOUS FEED SPINNER HANGER BLAST MACHINE RHBD-K

Descaling, de-rusting, paint stripping, surface texturing and cleaning of steel fabrications

Rösler continuous feed spinner hanger blast machines allow the blast cleaning of **high volumes of large, heavy work pieces**. A flexible transport unit, for example, a power & free system, usually connects the shot blast machine with a painting line and a paint dryer.

The Rösler continuous feed spinner hanger blast machines guaranteee

- ▶ High-volume throughput
- ▶ High equipment uptime through easily exchangeable hung manganese steel wear plates
- ▶ Top performance and minimal wear of the turbines placed around the blast chamber in a "X" arrangement
- ▶ Easy integration into already existing manufacturing lines
- ▶ Trouble-free operation in a multi-shift environment



1 Blast media handling

- ▶ Excellent protection against blast media spillage:
 - Patented seal with multiple sealing lips and brushes in the ceiling of the blast chamber
 - Inlet and outlet chambers equipped with automatic doors and rubber curtains
- ▶ Extra wide cascade air wash separator ensures excellent cleaning of the blast media
- ▶ Highly effective automatic return of the thrown blast media into the recycling system

2 Minimal maintenance work, high equipment uptime

- ▶ Inlet and outlet chamber: Lined with wear-resistant 6 mm thick manganese steel over a length of 2 meters
- ▶ Blast chamber as single-piece weldment made from 8 mm thick manganese steel
- ▶ Lined with easily exchangeable hung or bolted plates made from manganese steel
- ▶ Integrated dropout box helps extend the life of the dust collector cartridges by 30 %

3 Optional

- ▶ Post blast chamber for manual touch-up blasting, equipped with suction blast media collection system and automatic media return

Specifications RHBD-K

Model	RHBD-K 11/15	RHBD-K 13/18	RHBD-K 17/22-L	RHBD-K 17/22-HD
Max. work piece width (mm)	900	1,100	1,500	1,500
Max. work piece height (mm)	1,300	1,600	2,000	2,000
Turbines	8x Gamma 400G	8x Gamma 400G	8x Gamma 400G	12x Gamma 400G
Turbine power, Standard / Optional (kW)*	11 / 15	11 / 15	11 / 15	11 / 15
Capacity dust collector (m³/h)	10,000	10,000	12,500	12,500
Shot blast performance (m/min)*	0.5 - 2.0	0.5 - 2.0	0.5 - 2.0	0.5 - 2.0

Model	RHBD-K 22/27-HD	RHBD-K 27/32-HD	RHBD-K 37/37-HD
Max. work piece width (mm)	2,000	2,500	3,500
Max. work piece height (mm)	2,500	3,000	3,500
Turbines	12x Gamma 400G	16x Gamma 400G	20x Gamma 400G
Turbine power, Standard / Optional (kW)*	11 / 15	11 / 15	11 / 15
Capacity dust collector (m³/h)	15,000	20,000	30,000
Shot blast performance (m/min)*	0.5 - 2.0	0.5 - 2.0	0.5 - 2.0

*) Higher shot blast performance available upon request

PARTNERS FOR STEEL P4S

The cooperation between three world-renowned companies with decades of experience, for the benefit of all steel fabricators and steel traders



Vernet Behringer, located in Dijon, a leading supplier of drilling systems, Behringer GmbH, manufacturer of innovative steel sawing technologies, and Rösler Oberflächentechnik GmbH, global leader in surface refinement technologies, including preservation lines, are closely cooperating. The result: Integrated sawing, drilling and shot blasting systems from a single source.

On a global scale more than 2,000 employees are pooling their knowledge of steel processing in a tight network of branches and international distributors for the benefit of their customers.

Precise sawing technology and high-performance drilling centers are the core competence of the two specialists Behringer and Vernet Behringer.

Combined with finely tuned shot blasting solutions from Rösler this combination of experts designs manufacturing lines that are perfectly adapted to the work pieces without any interface problems – everything comes from one single source!

The detailed technical coordination between the three partner companies greatly facilitates decision processes - from the initial project phase to the final commissioning.

Technical issues that to date had to be resolved by the users, are now handled by „Partners 4 Steel“! This saves time and provides perfect cost transparency and optimal manufacturing conditions.

Renowned global players in the steel processing industry trust the know-how of our specialists on a daily basis.

RÖSLER OBERFLÄCHENTECHNIK GMBH

The name RÖSLER stands for technological leadership in the field of mechanical surface refinement. The customers can count on our innovative products & services, our comprehensive process know-how and our integrated solutions.

We support our customers with a tight network of branches and international distributors in more than 60 countries. And we offer a comprehensive portfolio of machinery for surface refinement – everything from a single source.

The Rösler range of shot blasting equipment includes stand-alone machines, roller conveyor and hanger shot blast machines for entire weldments as well as turn-key preservation lines. The focus of preservation lines is on the application of welding primers as temporary corrosion protection or the final coating. Preservation lines generally consist of individually adapted work piece transport systems, a pre-heater, a roller conveyor shot blast machine, an automatic paint system and a paint dryer. The entire line can be adapted to different applications as well as to different work piece sizes and shapes.

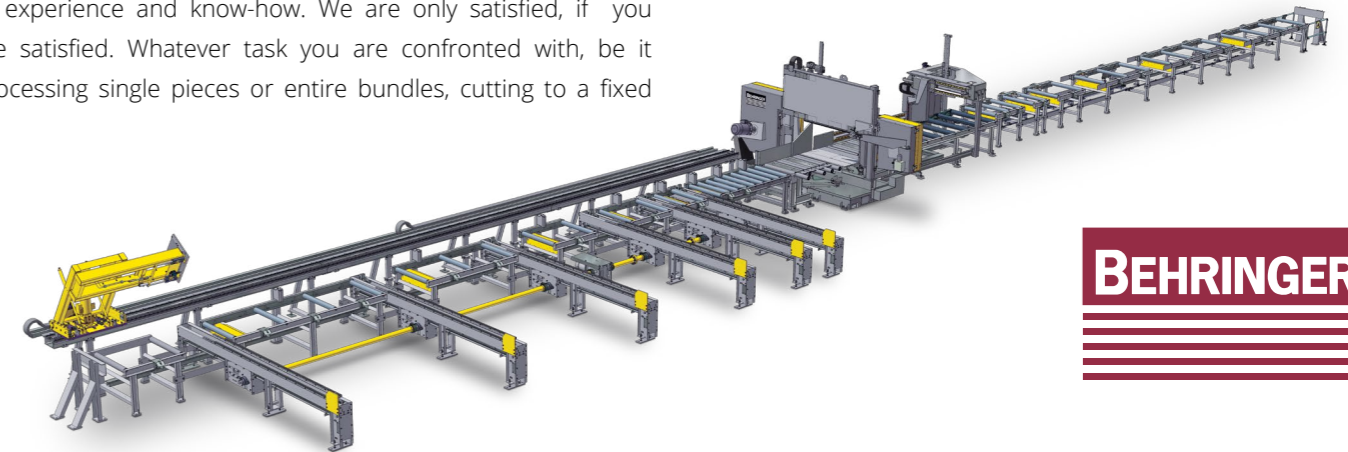


BEHRINGER GMBH

We are your partners for your everyday sawing problems. Behringer offers the globally largest range of high-performance band and circular saws for the steel and metal processing industries.

Our top-of-the-line products reflect more than 100 years of experience and know-how. We are only satisfied, if you are satisfied. Whatever task you are confronted with, be it processing single pieces or entire bundles, cutting to a fixed

or variable length, we are your partner! This includes the processing of steel beams, pipes, profiles or steel plates. The Behringer high-performance miter band saws can handle any sawing task at nearly any angle and in any cutting section. When it comes to cutting performance, precision and quality, our equipment is unrivalled.



VERNET BEHRINGER

VERNET BEHRINGER offers entire processing lines for steel fabricators and manufacturers of lattice-type towers. These include efficient machinery for processing profiles and angles, steel plate processing centers and individualized automation solutions, all from a single source.

As a leading supplier of profile processing systems VERNET BEHRINGER develops and manufactures innovative, efficient machines and production lines for steel fabricators, manufacturers of lattice-type towers and other industries. Wherever steel plates and profiles must be processed, we have the solution. New milling machines and high-speed drilling systems are rounding off our equipment range.

With complete automation solutions for loading, unloading and sorting VERNET BEHRINGER offers turn-key solutions from one single source. In-house software developments are setting new standards for the digitization, for example, process monitoring in real time or linking the equipment controls to a higher-level ERP system.

Of course, we also offer innovative services that are adapted to your requirements and help increase the productivity of your company.



ACCESSORIES

Optional accessories are available for **optimizing the shot blasting operations, decreasing costs, lowering material usage and reducing manual material handling**. Our experts will assist you in the planning of your new equipment.



Blast media transport and cleaning systems

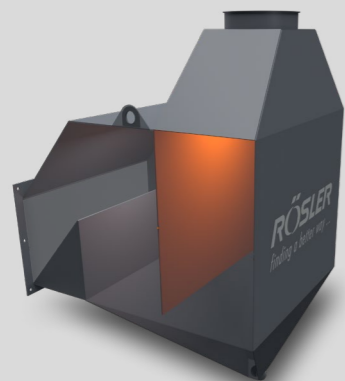
The blast media recycling and cleaning system ensures an even media transport through the blast machine and maintains an optimal operating mix. This guarantees excellent, consistent blast results. Safety devices identify foreign objects and discharge them from the recycling system. The utilized components, such as augers, elevators and air wash separators are precisely adapted to your shot blast equipment.



Dust collector

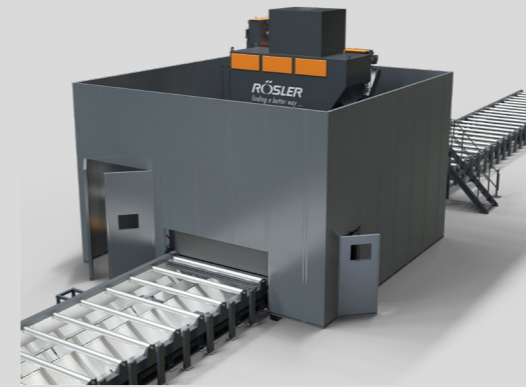
Our air filtering systems, placed on top of the shot blast machines and equipped with dry cartridge or explosion protected cartridge dust collectors or wet collectors, are available in different sizes. The dry cartridge collectors achieve a residual dust content in the clean air of $<1 \text{ mg/Nm}^3$, considerably lower than the $3 - 5 \text{ mg/Nm}^3$ required by the standards in Germany. Air flow capacities range from 1,000 bis 25,000 m^3/h .

Upon request our dry dust collectors can be equipped with a rotary air lock that allows continuous dust discharge into a big bag.



Dropout box

Placed in the exhaust air duct, the dropout box catches and discharges undersized media from the air flow. The exhaust air, loaded with dust, enters the dropout box from the side or the top and hits an impact plate. Coarse, heavier particles cannot follow this air flow diversion and fall to the bottom.



Noise absorbing cabin

Depending on the machine type and the number of turbines, the noise level around a shot blast machine can reach over 80 dB(A). The noise absorbing cabins consist of high-quality dual-wall segments with a lining on the inside. Their individual design ensures that the specified max. noise level is not exceeded. To save costs Rösler noise absorbing cabins are only placed around those equipment components that require protection against noise.



Power & Free chain transport systems

Die P&F chain transport systems connect several processing stations with each other (for example, assembly, shot blasting, painting, quality control and packing). P&F systems are extremely versatile and can handle a broad range of transport tasks. The work piece trolleys are pulled through the rail of the transport system by a closed-loop endless chain. At all critical points and transfer stations "intelligent" sensors ensure the precise handling of the arriving trolleys.



RTO or thermal oxidation

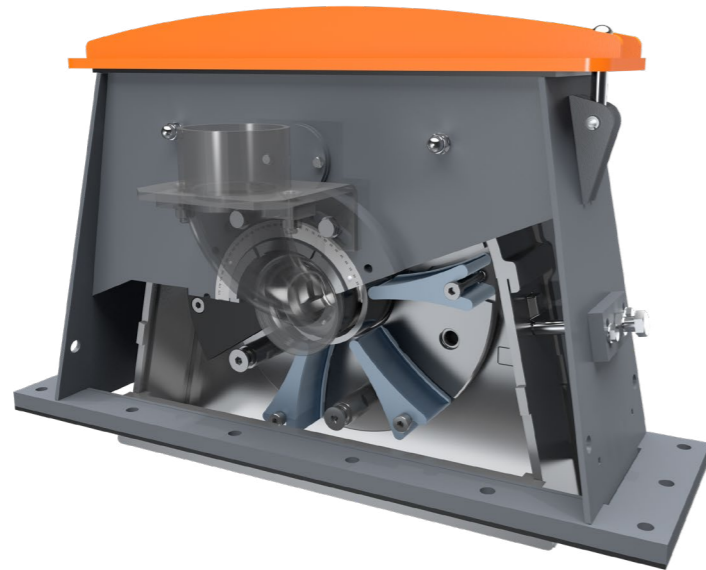
Regenerative thermal oxidation units are necessary whenever the VOC content of the used paint exceeds a limit, and this content cannot be discharged into the environment without additional filtering measures. Depending on the composition of solvent-based paints and their VOC contents, certain clean air limits must be met. The users must find out the exact limits in their respective countries and regions. The RTO unit is available as a 2-chamber or 3-chamber version. During the heat-up phase a gas burner heats multiple ceramic plates in the combustion chambers to about 800 °C. At this high temperature the vapors and gases coming from the paint filter ignite and start a chain reaction. Therefore, continuous, energy-intensive combustion is not necessary.

TURBINE TECHNOLOGY GAMMA G

Easy to maintain, efficient and wear resistant

The blast turbines represent the heart of every shot blast machine. They determine the **shot blast results**, require a lot of replacement parts and demand careful maintenance. For these reasons they also offer the **largest potential for cost**

savings. Our newly developed range of **Gamma G** turbines, with their innovative throwing blade design, offer **maximum efficiency, excellent shot blasting results** and **significant energy savings**.



1

Easy to maintain & precise

- ▶ Quick exchange of the throwing blades through the top lid of the turbine housing
- ▶ The precisely calculated blade curvature creates extremely high throwing speeds, precise blast patterns and optimal efficiency
- ▶ Easy change of the rotational direction of the turbine for generating different blast patterns

3

Universal use & high cost-efficiency

- ▶ Gamma G turbines can be used in all shot blast machines for steel fabrication and the steel trade
- ▶ Depending on the shot blasting process up to 25 % lower costs compared to conventional turbines
- ▶ Excellent cost-benefit ratio

2

High uptime & efficient

- ▶ Energy-efficient blast media acceleration results in energy savings of up to 15 %
- ▶ The special throwing blades are made from tool steel, thus ensuring a high resistance against wear
- ▶ Both sides of the throwing blades can be used
- ▶ Depending on the utilized blast media, the uptime of the throwing blades is up to 3 x longer
- ▶ Design of the throwing blades is protected

AFTER-SALES-SERVICE



Twenty-four-seven technical support – throughout the life of your machine!

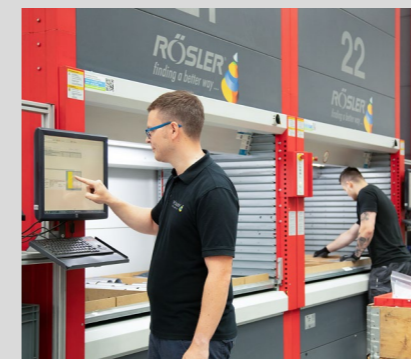
Irrespective of what surface treatment issues you might have, we offer professional support and meet all your requirements:

- ▶ Spare and wear parts, also for equipment supplied by other manufacturers
- ▶ Tailormade maintenance contracts
- ▶ Control and calibration of dust collectors
- ▶ Modernization and relocation of existing equipment
- ▶ Expert advice for all process questions
- ▶ Blast media analysis
- ▶ Support in meeting the operating standards for your equipment
- ▶ Protective ground wire tests (in accordance with EN 60204-1 / VDE 0113)
- ▶ BUS measurements
- ▶ Customer Experience Centers and process labs around the world
- ▶ Training courses for operators and maintenance personnel
- ▶ Added value through service contracts: 24 h emergency hotline



Maintenance and repair service

Our professional service team stands ready to serve you, be it helping with an emergency, a repair or a scheduled maintenance. With quick response times and well-equipped service vehicles we are able to maintain your onsite equipment or get it running again.



Spare and wear parts – also for equipment supplied by other manufacturers

By nature all shot blast machines are subject to wear! Rösler maintains a large stock of spare parts. This guarantees quick delivery and a high equipment uptime. If needed, we will arrange for delivery overnight.

Please find more information to our service for shot blast machines at www.rosler.com

CUSTOMER EXPERIENCE CENTER SHOT BLAST TECHNOLOGY

A special feature of the Rösler philosophy is our **integrative approach** to surface treatment challenges. Equipment and processes are not only tailored to the respective finishing task but also optimally integrated into the overall manufacturing operation. Practically all our Rösler locations have their own

Customer Experience Center (CEC) equipped with state-of-the-art machinery. To develop the best processing solutions we conduct comprehensive processing trials with the work pieces from our customers in our CEC's.



Process development and optimization

From the processing trials, the process development and equipment selection to an excellent after sales service, we provide "total" solutions from one single source. In our well-equipped Customer Experience Centers (CEC) we can demonstrate all shot blasting processes under actual production conditions. Ultramodern physical and chemical measuring technologies support the process development and optimization. The process and design engineers from our **development and engineering departments** develop

custom-engineered solutions on a daily basis. For the development of shot blasting solutions the processes are frequently planned with computer simulations. Thanks to ultramodern software we are able to electronically reproduce the possible finishing results on the surface of the work pieces. These simulations allow us to **optimize the physical arrangement** of the media acceleration systems relative to the work pieces that must be blasted.

Product development and optimization

The unique depth of our Rösler equipment portfolio, our Customer Experience Centers (CEC) around the world and our well-equipped lab in Untermerzbach, Germany, are

ideal conditions for innovative and cost-effective product development in the field of shot blasting.

LEARNING FROM THE GLOBAL MARKET LEADER

Our expertise in the field of mechanical surface treatment is based on over 80 years of experience. As global technology and market leader in the refinement of surfaces we offer excellent

complete solutions – from equipment and accessories, all the way to after sales service. We are happy to pass this unique knowledge to you in our training seminars.



Rösler Academy

The central training center of the Rösler Oberflächentechnik GmbH

- ▶ An area of more than 1,350 m² for learning and working
- ▶ Equipped with the latest digital media and communication technologies
- ▶ Certified professional trainers
- ▶ Specialized fields: Mass finishing, shot blasting, lean management
- ▶ More than 10 different training seminars
- ▶ Focus on hands-on learning
- ▶ Training seminars in German and English
- ▶ Customized training seminars at customer locations upon request

Our professional trainers

All our trainers are certified and are among the best in their respective fields. In our training seminars you will benefit from the extensive experience of our trainers, who will provide you with first-hand practical knowledge.

Ø Participants per year



Over 1,000

Ø Rating



9.6 out of 10 possible points¹

Ø Recommendation rate



99 %¹

¹ Source: Evaluation questionnaires filled out by participants, Status 31/12/2022

You can find more information about our seminars, dates and registration procedures under www.rosler-academy.com or scan the QR-Code.



RÖSLER SMART SOLUTIONS

A digital added value to meet your challenges



Now is the time to promote **the digital transformation** and develop innovative digitization solutions for the shot blasting technology! Under our new brand **Rösler Smart Solutions** we have developed comprehensive digitization modules that will allow you to make **your shot blasting processes** and **their**

parameters more transparent and to define the potential for substantial cost savings. Our software package helps taking advantage of the **potential for optimization** and **significant reduction of operating costs**.



Transparency of processes and costs



Realtime process monitoring and recording of data



Quick correction of deviations and faults



Intelligent equipment operation with uptime projections



Optimized utilization of resources and cost reduction

The **digitization portfolio for shot blasting equipment** was developed for our entire equipment range. It contains soft- and hardware packages that can be utilized for the following topics:



WORK PIECE QUALITY

- ▶ Combination of all shot blasting parameters into one common metric called "shot blast performance"
- ▶ Recording of all process data that influence the work piece quality
- ▶ Individual evaluation of the achieved production volume



OPERATING PARAMETERS

- ▶ Realtime monitoring of all consumption values
- ▶ Digital archiving of all recorded data. This allows the identification of operating patterns and trends
- ▶ Visualization of individually defined time periods



MAINTENANCE

- ▶ Collection of the uptime history for each turbine facilitates preventive maintenance
- ▶ Operating times and equipment availability are displayed in a simple, easy-to-understand format
- ▶ Spare part orders prepared in advance, including mail-to-function



Mass Finishing
Shot Blasting
AM Solutions
www.rosler.com

Germany

Rösler Oberflächentechnik GmbH
Werk Memmelsdorf
Vorstadt 1
D-96190 Untermmerzbad
Tel.: +49 9533 / 924-0
Fax: +49 9533 / 924-300
info@rosler.com

Rösler Oberflächentechnik GmbH
Werk Hausen
Hausen 1
D-96231 Bad Staffelstein
Tel.: +49 9533 / 924-0
Fax: +49 9533 / 924-300
info@rosler.com

USA

Rösler Metal Finishing USA, L.L.C.
1551 Denso Road
USA-Battle Creek
MI 49037
Tel.: +1 269 / 4413000
Fax: +1 269 / 4413001
rosler-us@rosler.com

France

Rösler France
Z.I. de la Fontaine d'Azon
CS 50513 - St. Clément
F-89105 Sens Cedex
Tel.: +33 3 / 86647979
Fax: +33 3 / 86655194
rosler-fr@rosler.com

Italy

Rösler Italiana S.r.l.
Via Elio Vittorini 10/12
I-20863 Concorezzo (MB)
Tel.: +39 039 / 611521
Fax: +39 039 / 6115232
rosler-it@rosler.com

Switzerland

Rösler Schweiz AG
Staffelbachstraße 189
Postfach 81
CH-5054 Kirchleerau
Tel.: +41 62 / 7385500
Fax: +41 62 / 7385580
rosler-ch@rosler.com

Spain

Rösler International GmbH & Co. KG
Sucursal en España
Polg. Ind. Cova Solera C/Roma, 7
E-08191 Rubí (Barcelona)
Tel.: +34 93 / 5885585
Fax: +34 93 / 5883209
rosler-es@rosler.com

Netherlands

Rösler Benelux B.V.
Reggestraat 18
NL-5347 JG Oss
Postbus 829
NL-5340 AV Oss
Tel.: +31 412 / 646600
Fax: +31 412 / 646046
rosler-nl@rosler.com

Belgium

Rösler Benelux B.V.
Avenue de Ramelot 6
Zoning Industriel
B-1480 Tubize (Saintes)
Tel.: +32 2 / 3610200
Fax: +32 2 / 3612831
rosler-be@rosler.com

Austria

Rösler Oberflächentechnik GmbH
Hetmanekgasse 15
A-1230 Wien
Tel.: +43 1 / 6985180-0
Fax: +43 1 / 6985182
rosler-at@rosler.com

Romania

Rösler Romania SRL
Str. Avram Iancu 39-43
RO-075100 Otopeni/ILFOV
Tel.: +40 21 / 352 4416
Fax: +40 21 / 352 4935
rosler-ro@rosler.com

Russia

Rösler Russland
Borovaya Str. 7, bldg. 4, office 107
111020 Moscow
Tel. / Fax: +7 495 / 247 55 80
rosler-ru@rosler.com

Great Britain

Rösler UK Ltd.
Unity Grove, School Lane
Knowsley Business Park
GB-Prescot, Merseyside L34 9GT
Tel.: +44 151 / 4820444
Fax: +44 151 / 4824400
rosler-uk@rosler.com

Brazil

Rösler Otec do Brasil LTDA
Av. Antonio Angelo Amadio, 1421
Centro Empresarial Castelo Branco
18550-000 Boituva
São Paulo - Brasil
Tel.: +55 15 / 3264-1117
Tel.: +55 15 / 3264-1112
info@rosler-otec.com.br

China

Rösler SURFACE-TECH (BEIJING) CO., LTD.
Beijing Office
Fu Hua Mansion, Office A-11-K
No. 8, Chao Yang Men North Avenue
Beijing 100027, P.R. China
Tel.: +86 10 / 6554 73 86
Fax: +86 10 / 6554 73 87
rosler-cn@rosler.com

and over 150 additional distributors
around the world



Find your contact